



Kindle Plugin for Adobe InDesign® 0.96 (Beta)

Help and Release Notes

Copyright © 2012 Amazon.com, Inc. or its affiliates. All rights reserved.

Published for Kindle Plugin for Adobe InDesign® 0.96

Adobe and Adobe InDesign are either registered trademarks or trademarks of Adobe Systems Incorporated in the United States and/or other countries. Apple and Mac OS are trademarks of Apple Inc., registered in the United States and other countries. Microsoft, Windows and Windows Vista are trademarks of Microsoft Corporation registered in the U.S and/or other countries. All other trademarks are the property of their respective owners.

Table of Contents

1. Kindle Plugin for Adobe InDesign® (Beta)	4
1.1 Download and Installation	4
1.1.1 Supported Adobe InDesign Versions and OS	4
1.1.2 Prerequisites	4
1.1.3 Windows	4
1.1.4 Mac	8
1.2 Getting Started	15
1.2.1 Conversion	15
1.2.2 Export and Save	15
1.3 Uninstallation	22
1.3.1 Windows	22
1.3.2 Mac	23
1.4 Publishing Guidelines	23
1.5 Customer Support	23
2. Release Notes	24
2.1 Product Releases	24
2.2 Supported Adobe InDesign features	25
2.3 Partial List of unsupported Adobe InDesign Features	26

1. Kindle Plugin for Adobe InDesign® (Beta)

“Kindle Plugin for Adobe InDesign® (Beta)” is a plug-in developed by Amazon for Adobe InDesign. This plug-in can be used to convert documents or books created in Adobe InDesign to Kindle format.

1.1 Download and Installation

The most recent version of Kindle Plugin for Adobe InDesign® (Beta) plug-in can be downloaded for free from www.amazon.com/kindleformat/kindlepluginforadobeindesign.

1.1.1 Supported Adobe InDesign Versions and OS

Kindle Plugin for Adobe InDesign® (Beta) supports Adobe InDesign versions CS4, CS5 and CS5.5. The supported operating systems are listed below.

1. Windows XP
2. Windows 7
3. Windows Vista
4. Mac 10.7
5. Mac 10.6
6. Mac 10.5 (experimental)

1.1.2 Prerequisites

Adobe InDesign version CS4, CS5 or CS5.5 must be installed before installing Kindle Plugin for Adobe InDesign® (Beta). On a Mac, [Security Update 2010-005](#) should also be installed. Only Intel Macs are supported.

Mac users running OS X 10.6.7 or later may also need to install the VeriSign Class 3 Code Signing 2009-2 CA available [here](#) to the “System” Keychain before installing the plugin. For detailed information about installing the certificate, please refer to the following [instructions](#).

1.1.3 Windows

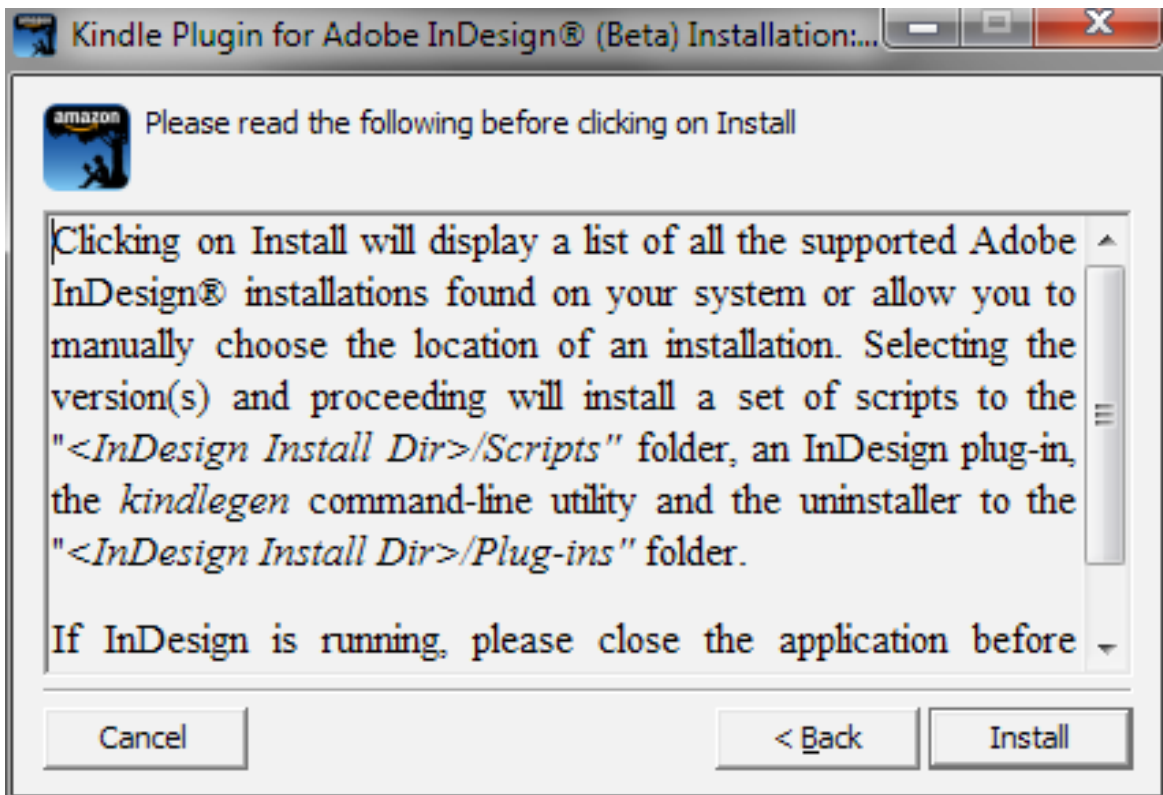
The plug-in is available as an “.exe” file and can be installed by double clicking the file and following the on screen instructions. The steps below detail the installation process.

1. It is advisable to install the plug-in after closing any open instances of Adobe InDesign. Adobe InDesign will need to be restarted after the plug-in is installed.

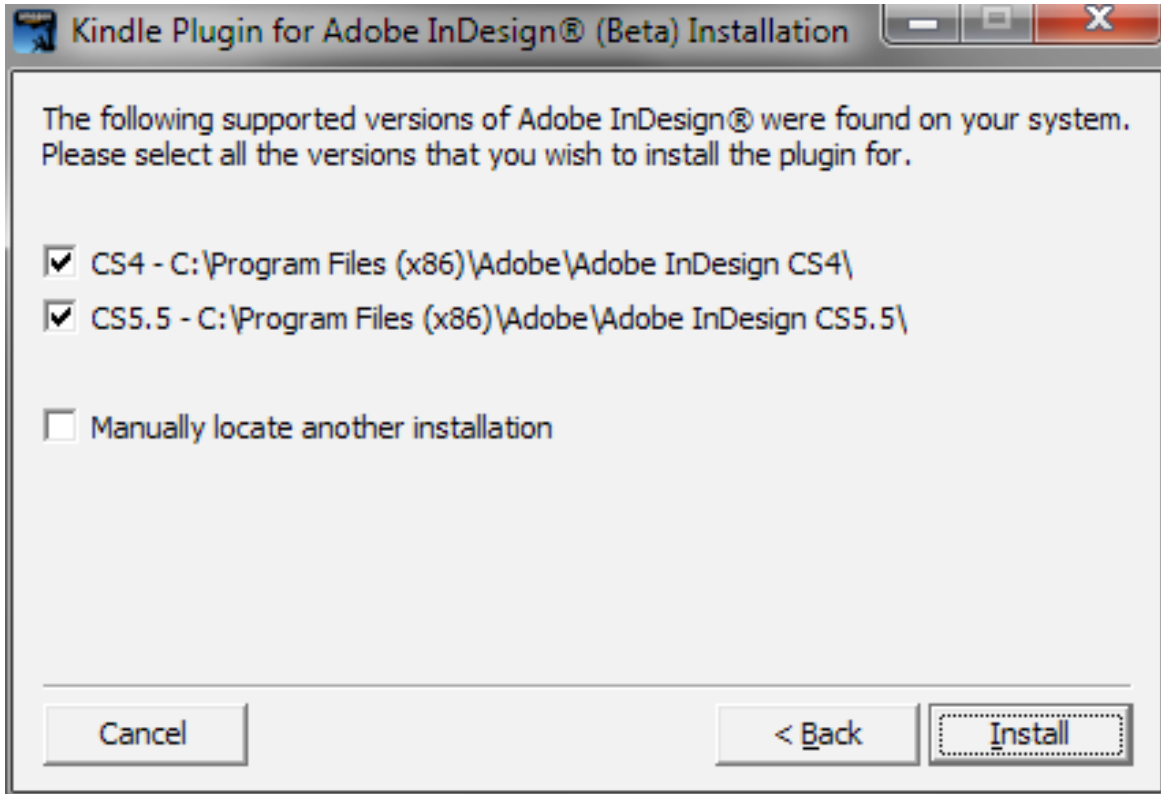
2. After double clicking the “exe” file, click on the “I Agree” button to accept the “Terms and Conditions”.



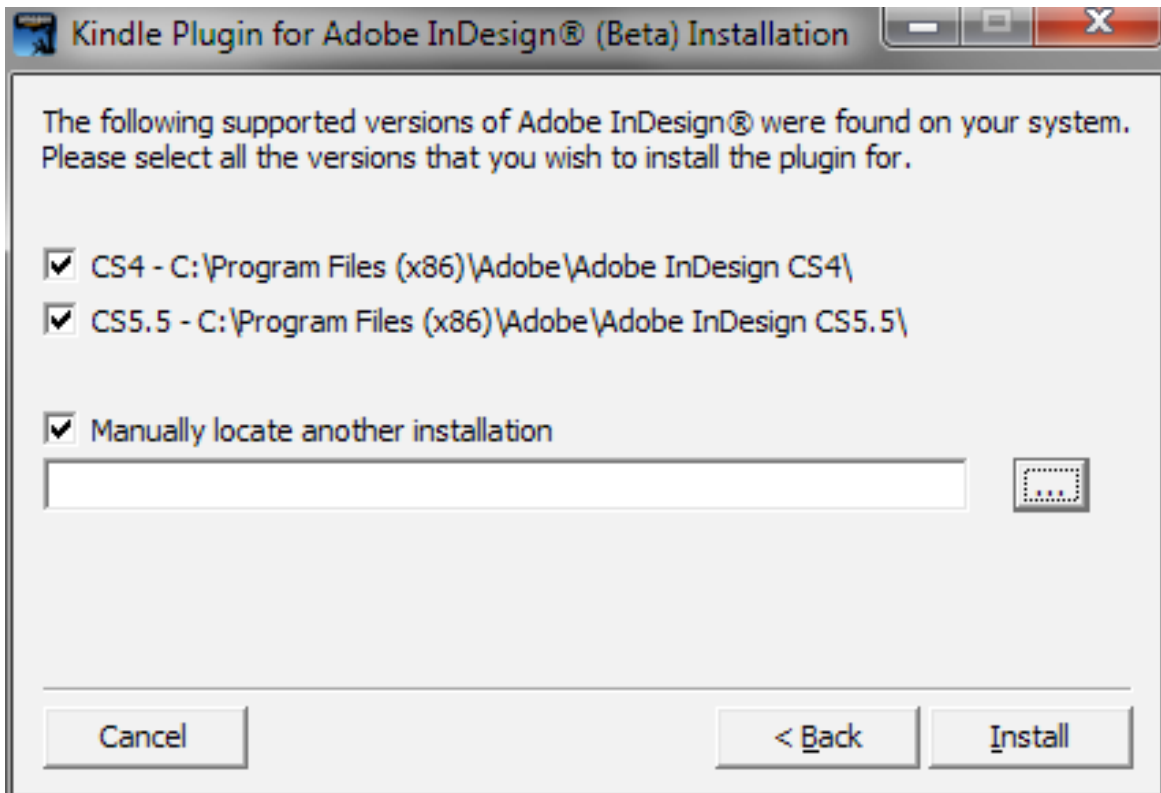
3. Click on “Install” in the dialog box to start the installation process.



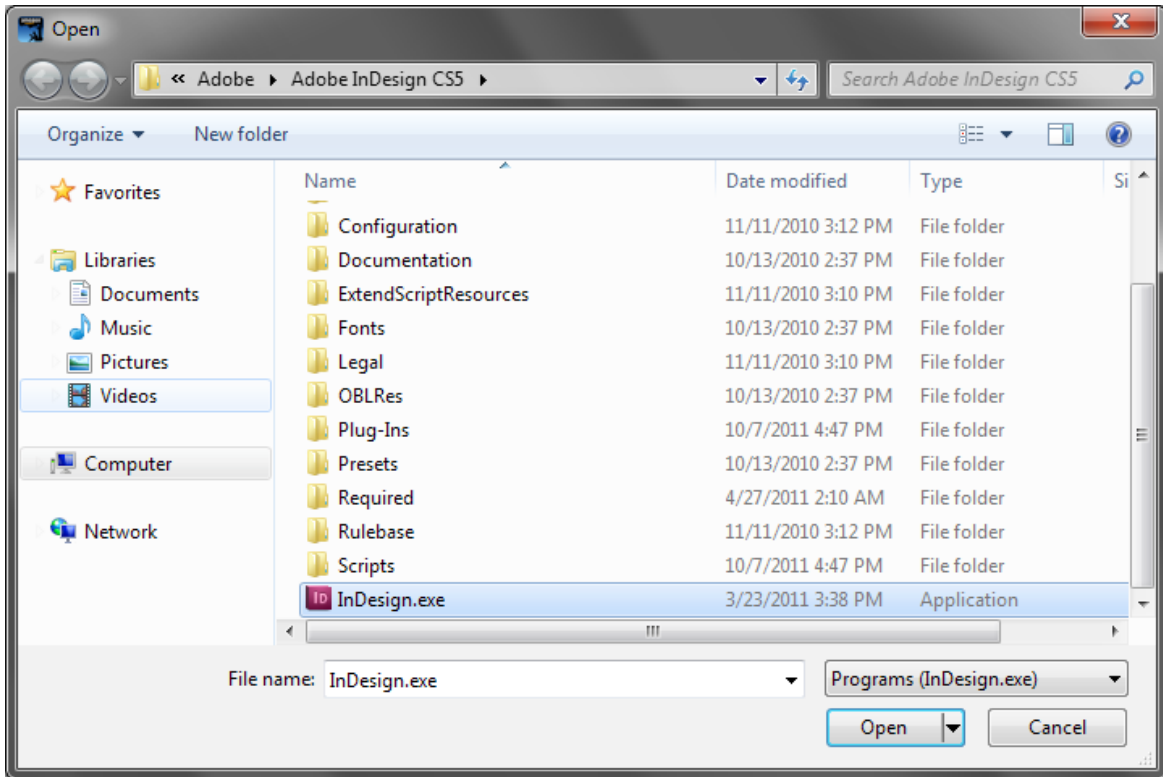
4. Choose all the versions of Adobe InDesign that you want to install the plugin for from the versions available on your system.



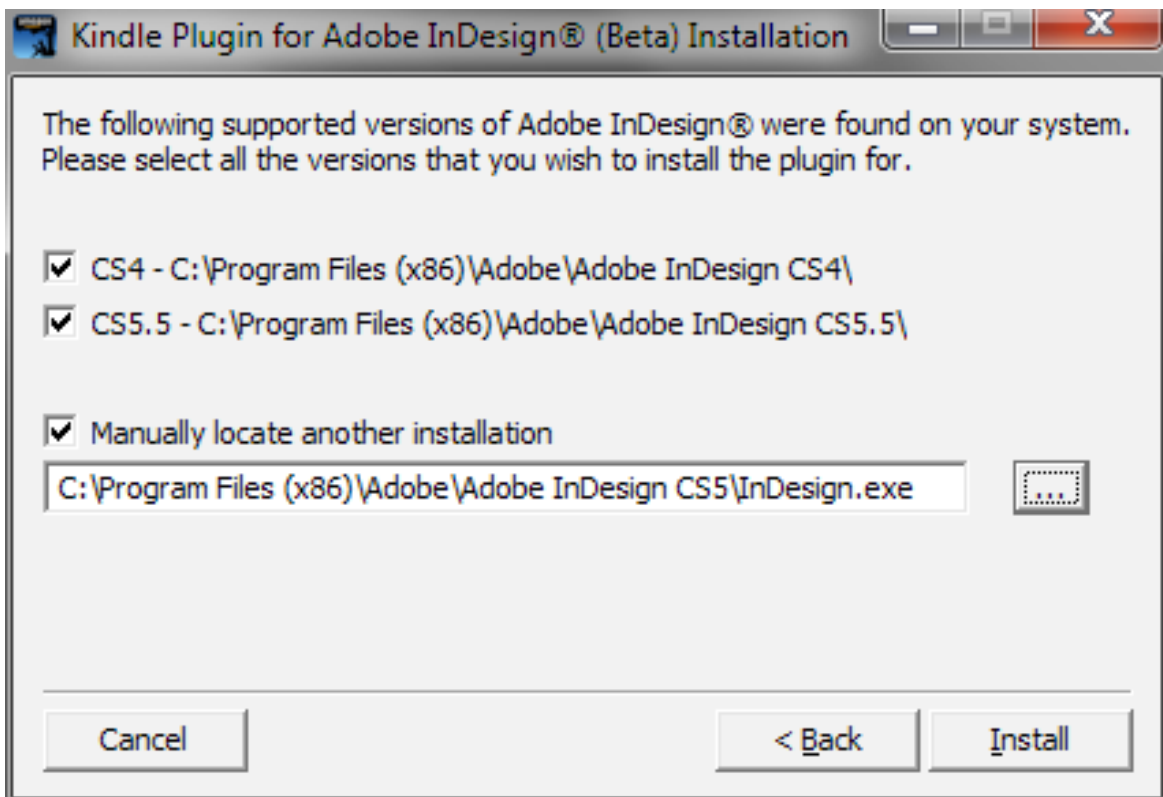
5. To manually locate a version of Adobe InDesign on your system, choose the “Manually locate another installation” option and click on the browse button, labeled “...”, to open the file chooser dialog.



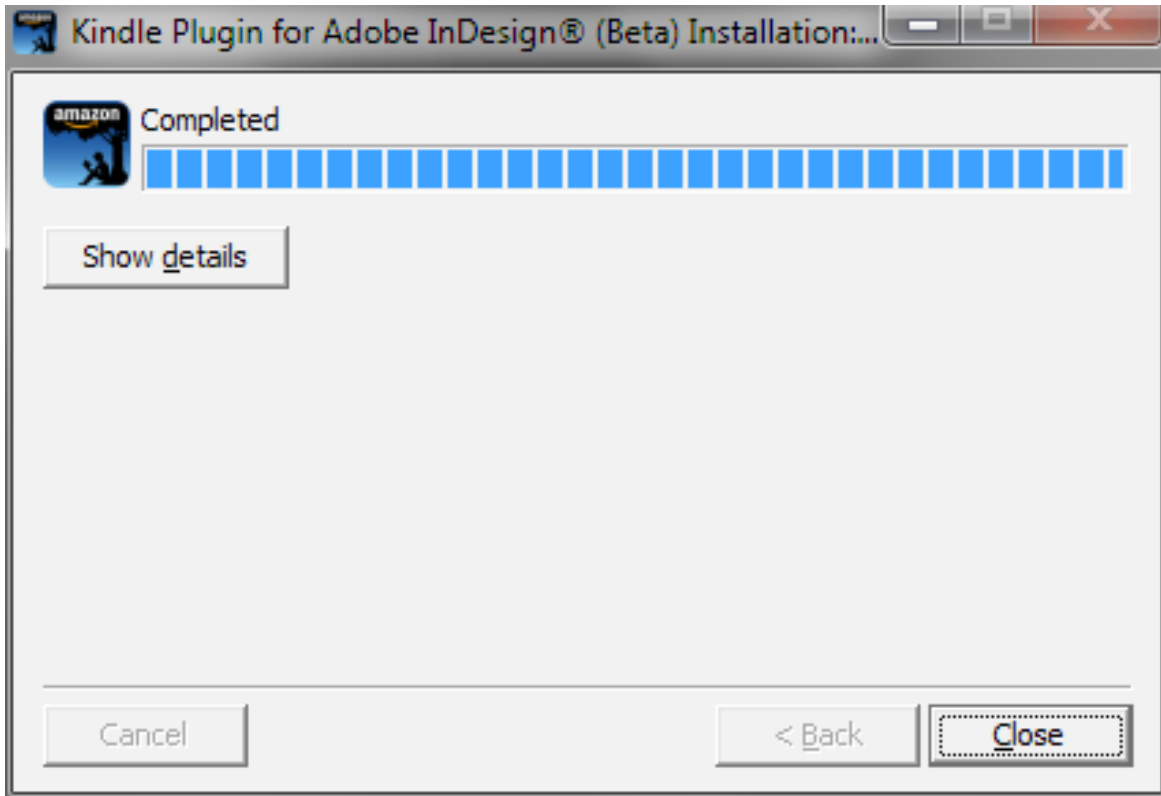
6. Locate and select the file “InDesign.exe” for your installation.



7. Click on “Install” to proceed with the installation.



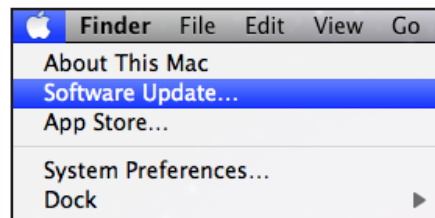
- Click on “Close” once the plug-in is installed successfully.



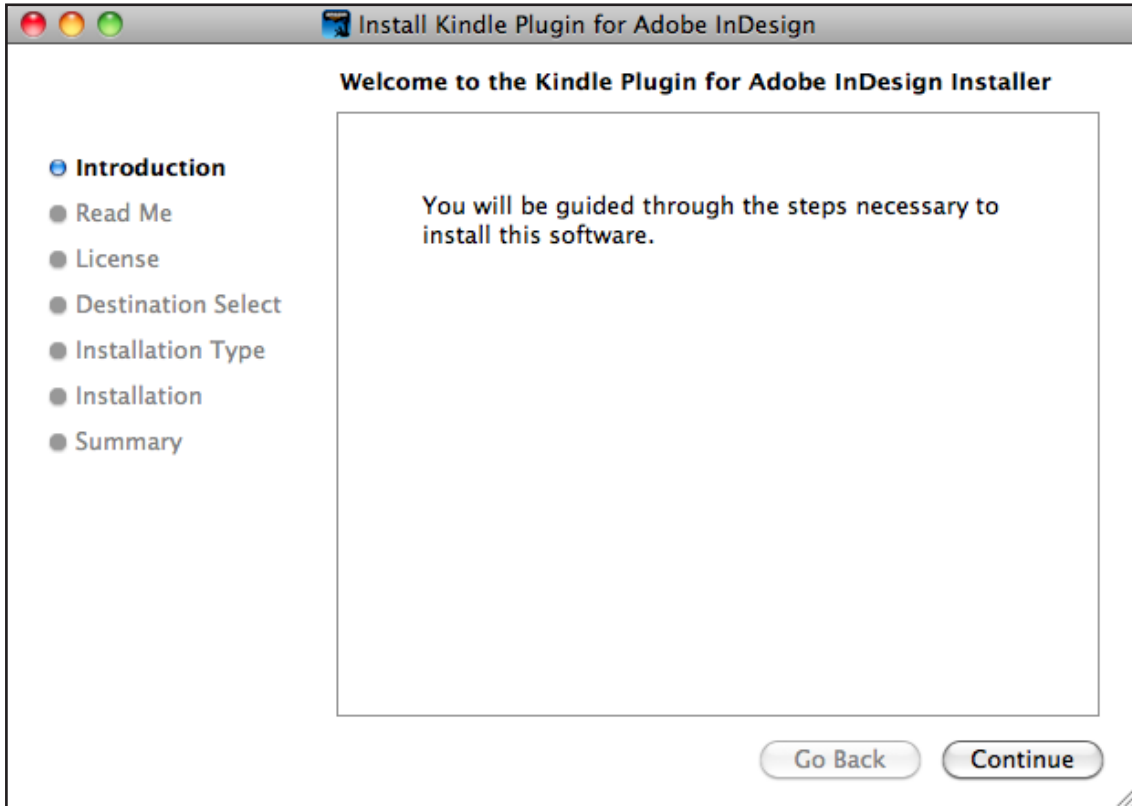
1.1.4 Mac

The plug-in is available as a “zip” file and can be installed by extracting the archive, double clicking the extracted file and following the on screen instructions. Before you install the plugin, make sure that you install [Mac OS X Security Update 2010-005](#). The steps below detail the installation process.

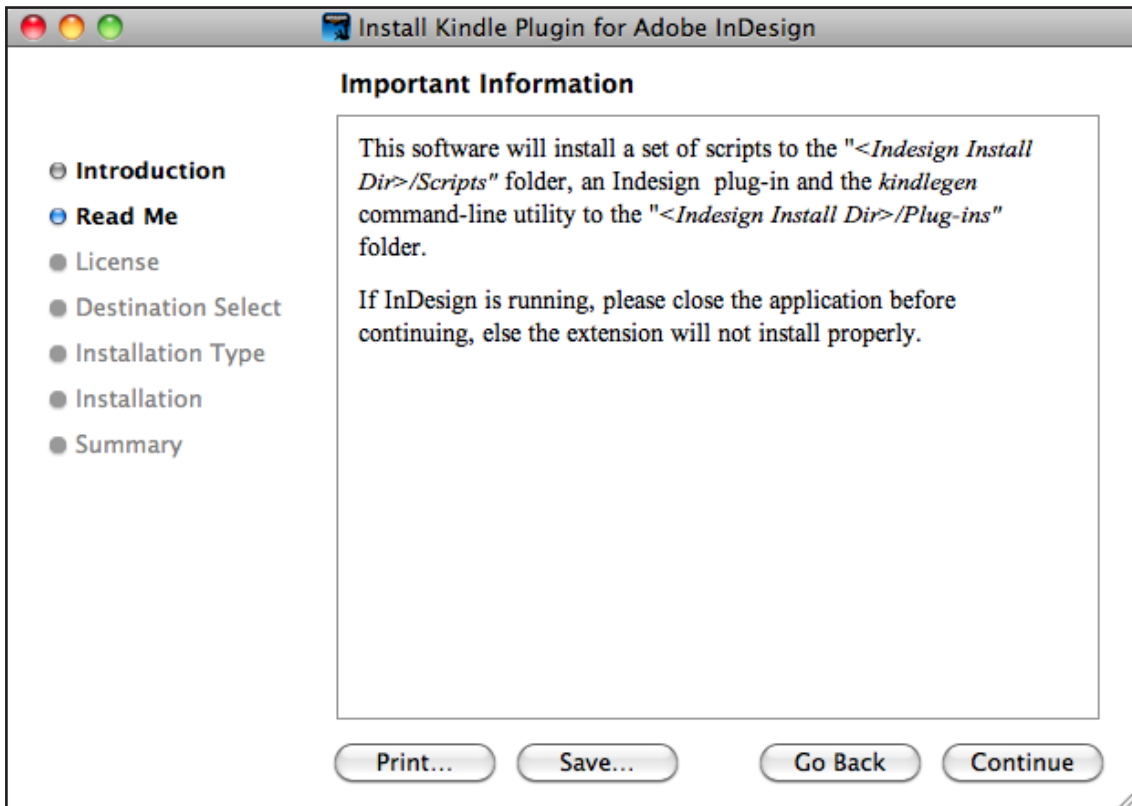
- It is advisable to install the plug-in after closing any open instances of Adobe InDesign. Adobe InDesign will need to be restarted after the plug-in is installed.
- Install Security Update 2010-005 by choosing “Software Update” from the Apple menu and installing the available updates.



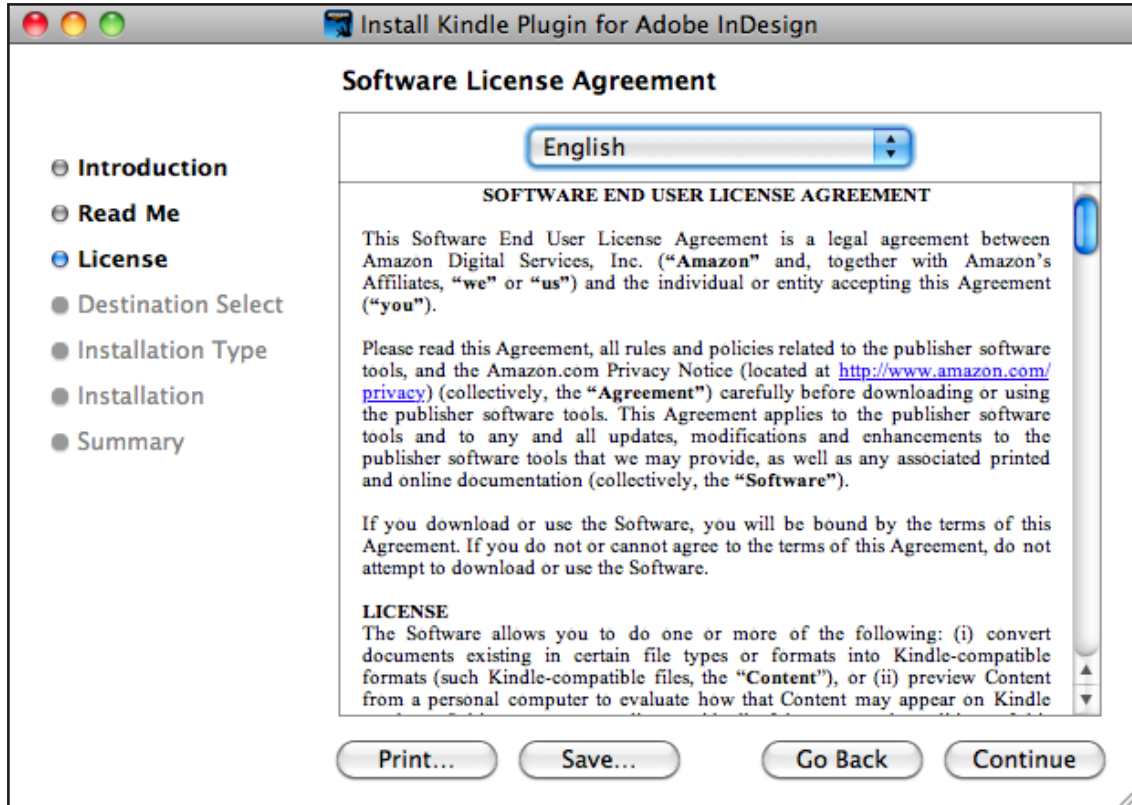
3. After double clicking the “zip” file and launching the installer, click on “Continue” in the dialog box to start the installation process.



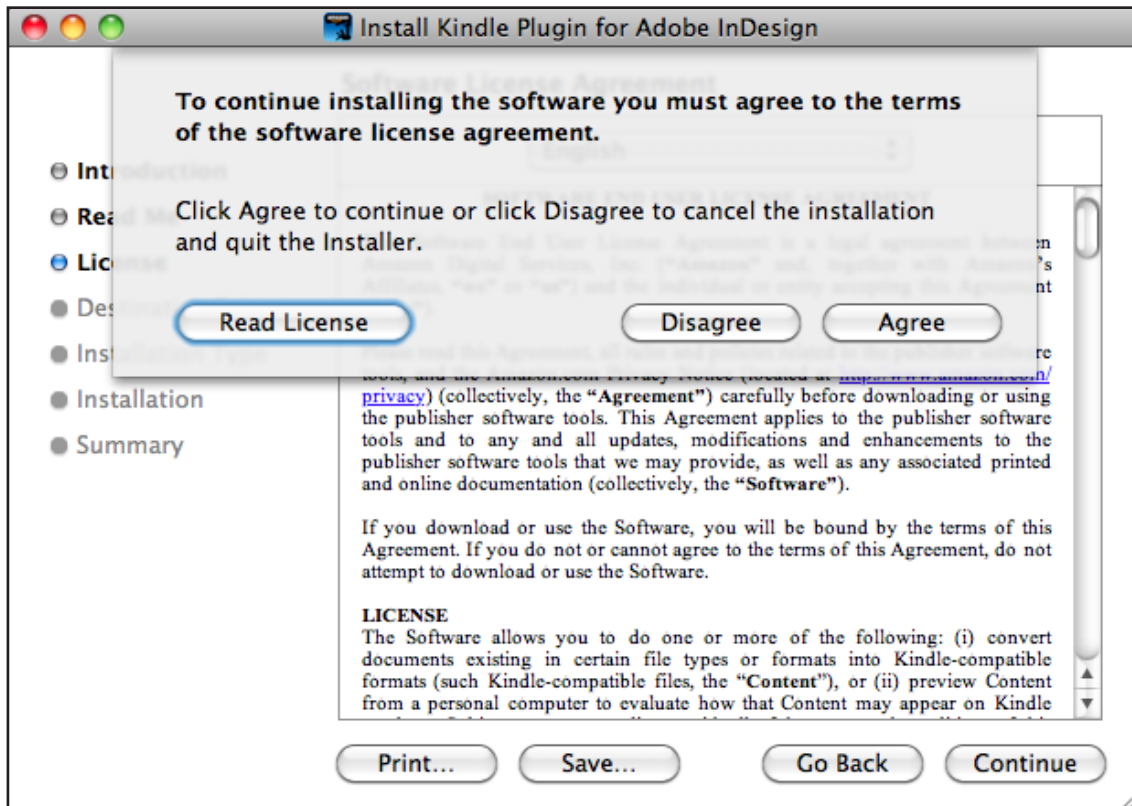
4. Click on “Continue” in the dialog box.



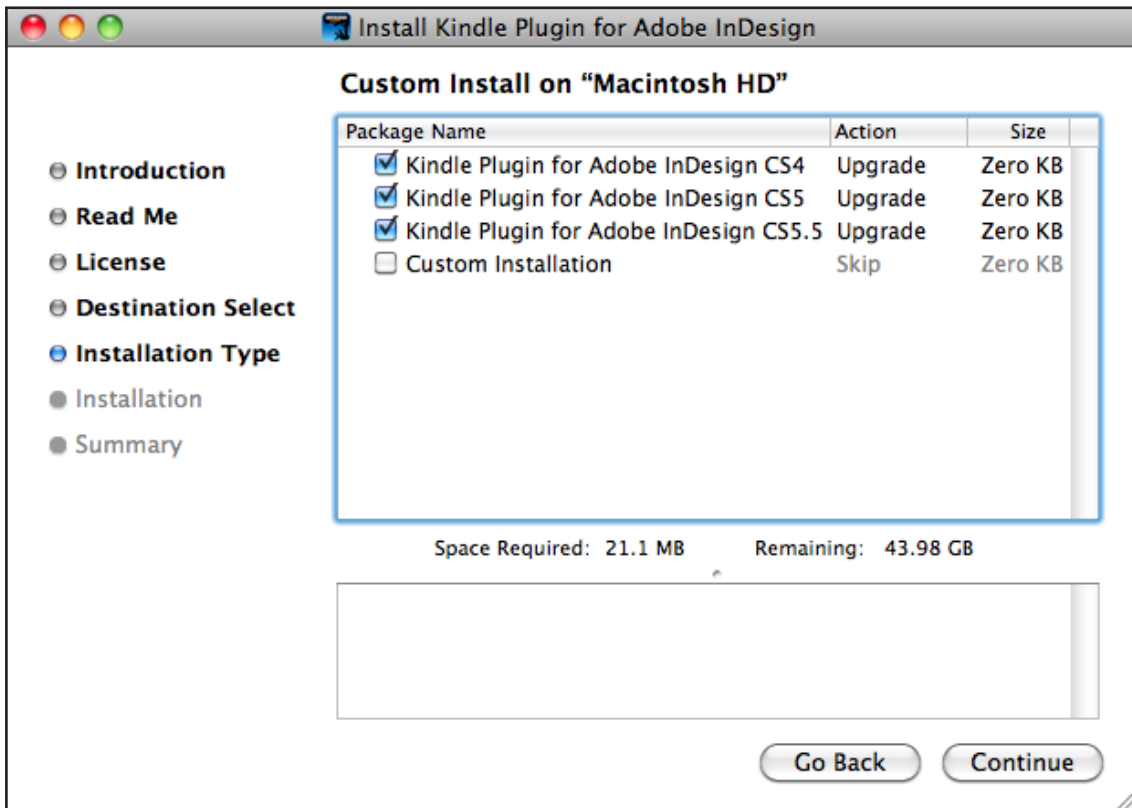
5. Click on “Continue” on the “Software License Agreement” page.



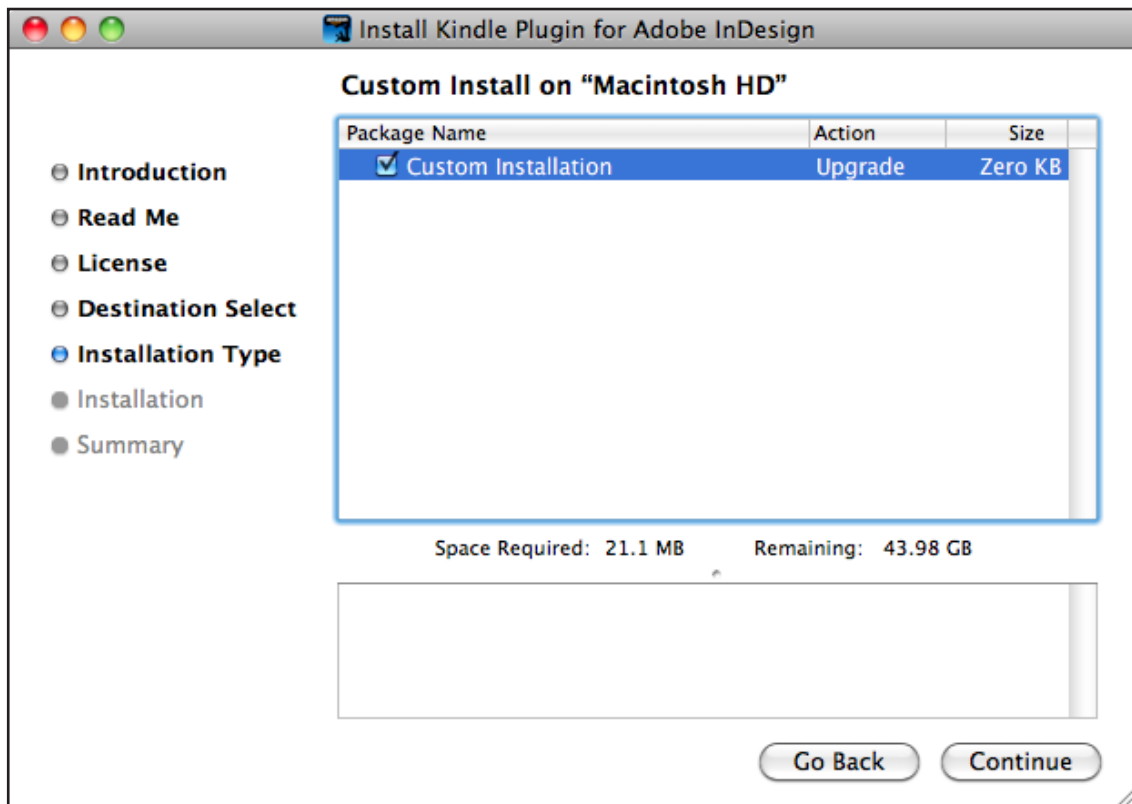
6. Click on “Agree” to accept the “End User License Agreement”.



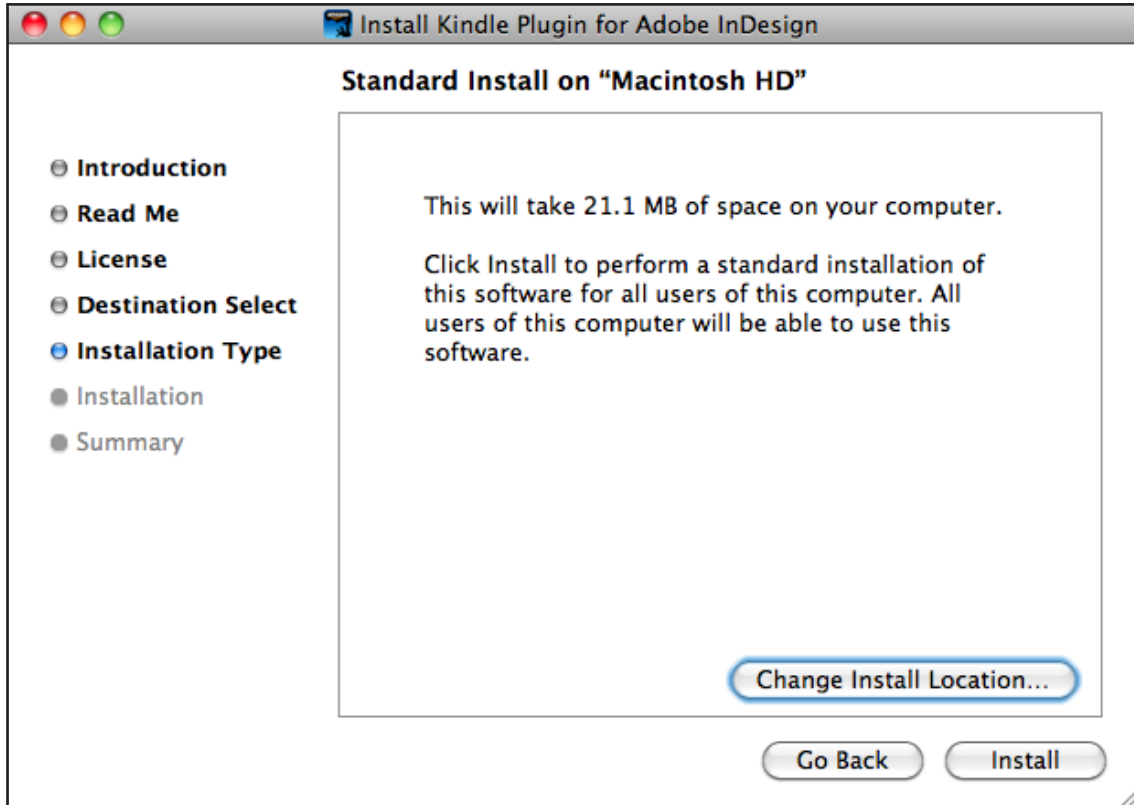
7. Choose all the versions of Adobe InDesign that you want to install the plugin for from the versions available on your system.



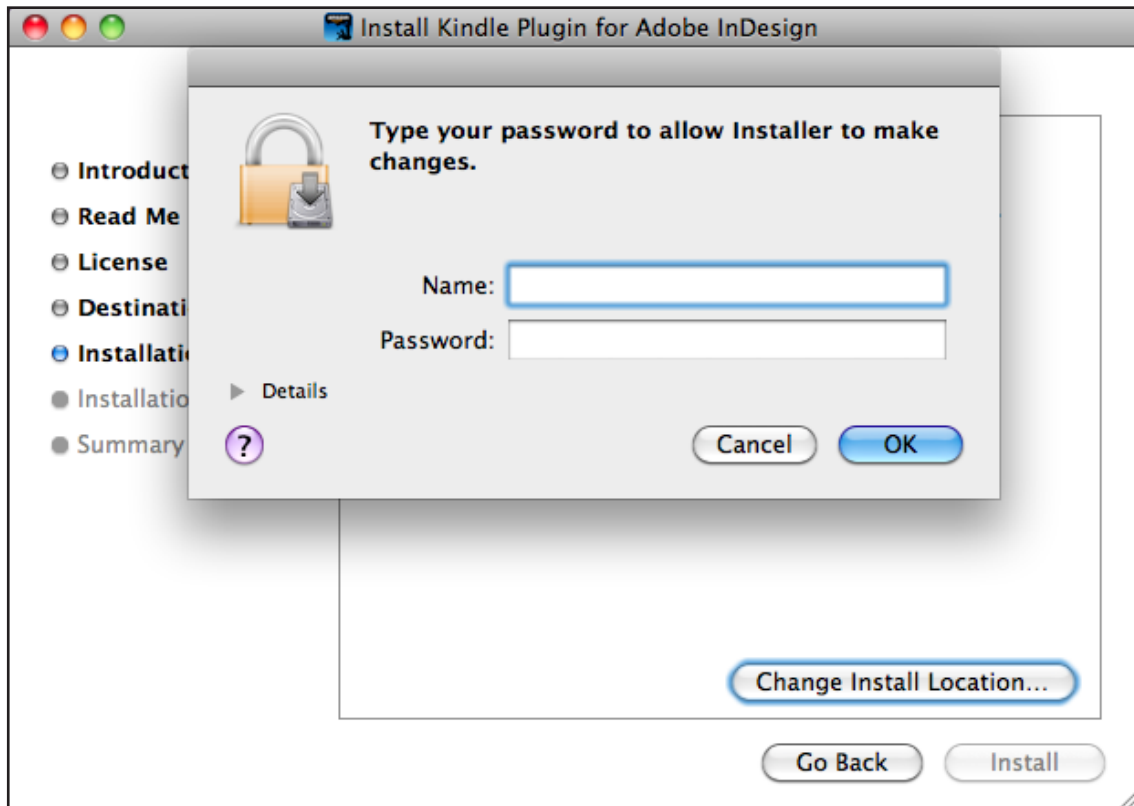
8. If no supported version of Adobe InDesign is found, you can choose to manually locate an installation.



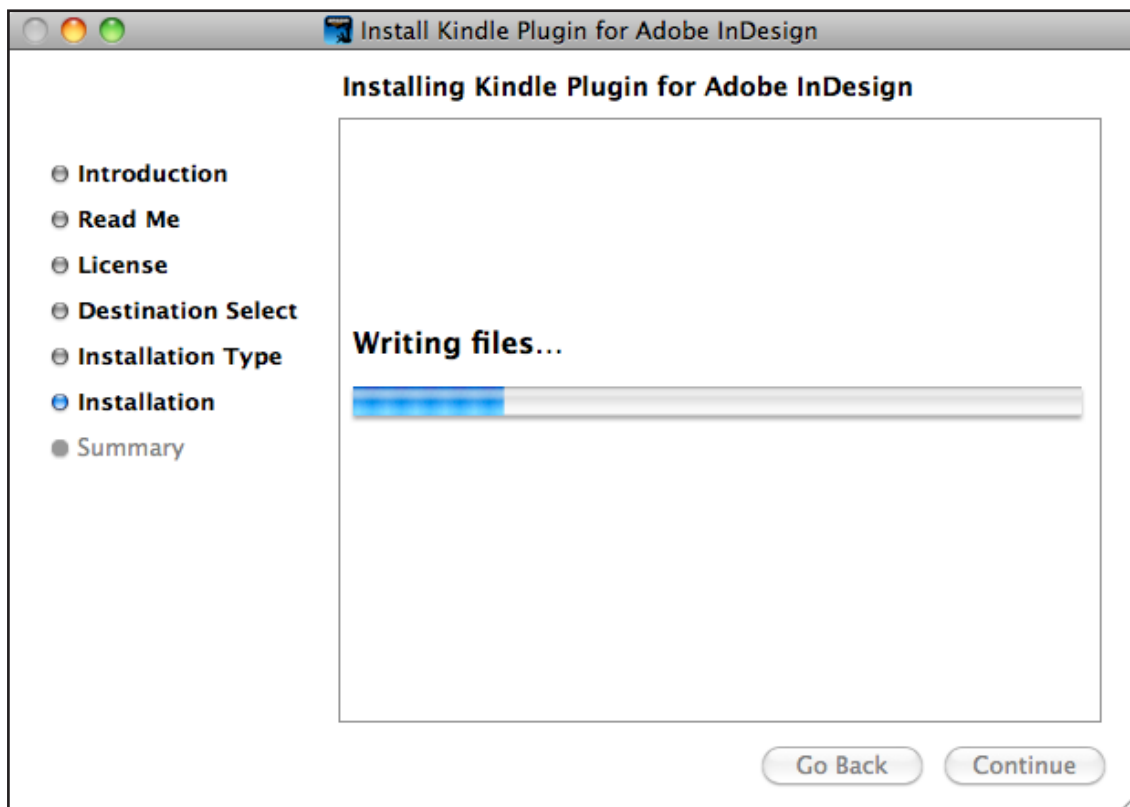
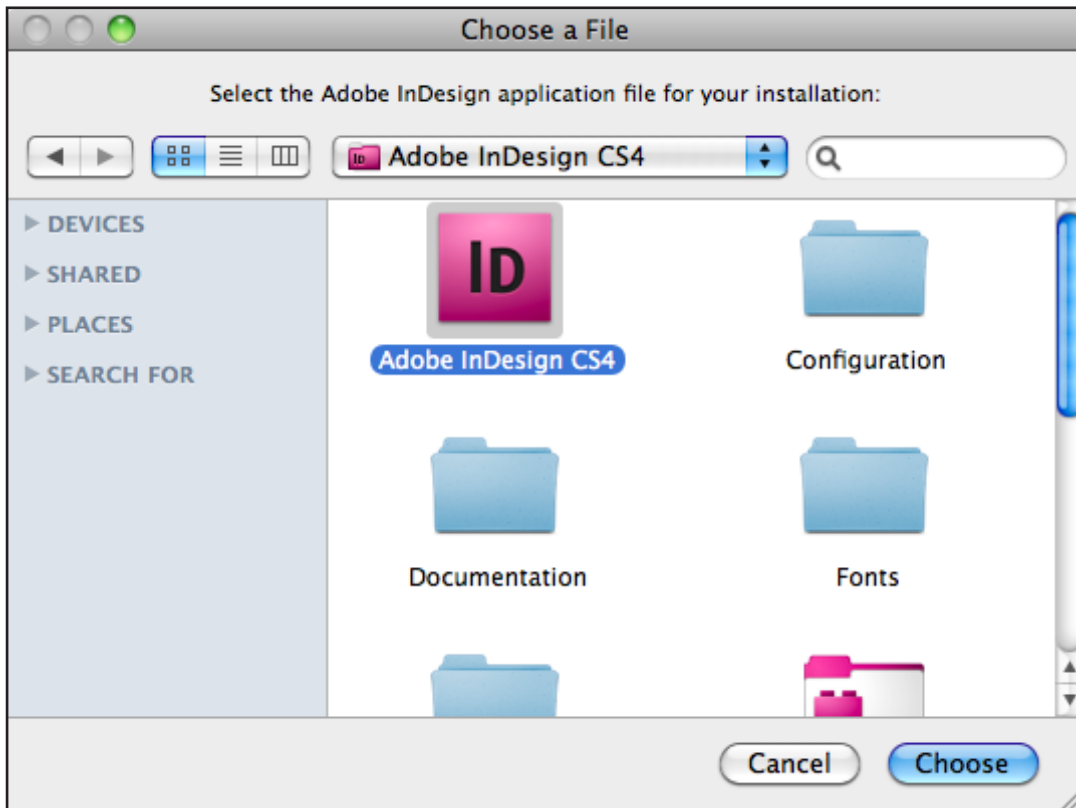
9. Click on “Install” to start the installation process.



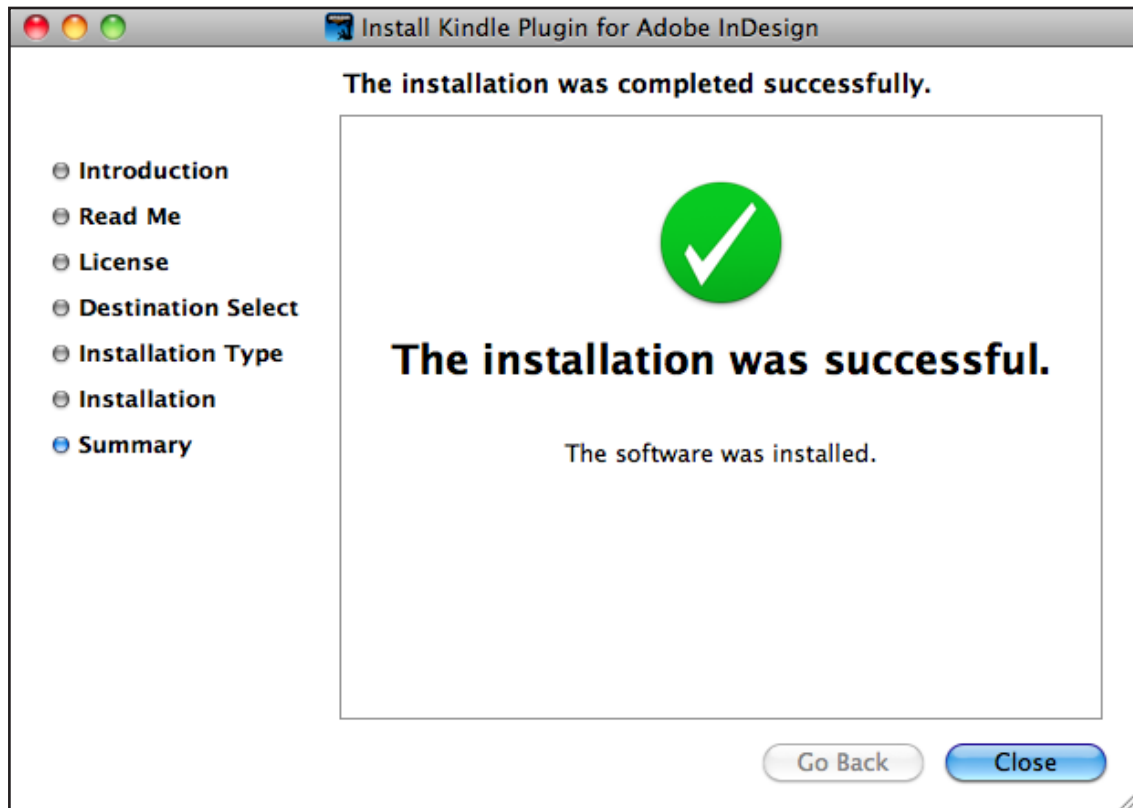
10. Provide authentication if prompted and click on “OK”.



11. If you selected Custom Installation, you will be prompted to locate an installation of Adobe InDesign. Navigate to and select the InDesign “.app” file.



12. Click on “Close” once you receive the “Install Succeeded” message.



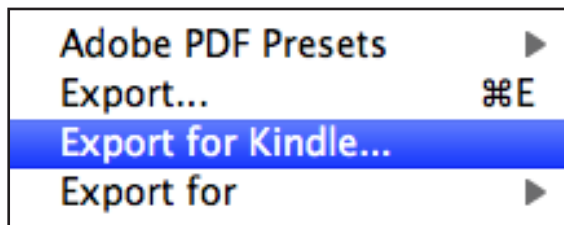
1.2 Getting Started

1.2.1 Conversion

Kindle Plugin for Adobe InDesign® (Beta) supports conversion of both Adobe InDesign documents (.indd) and Adobe InDesign books (.indb).

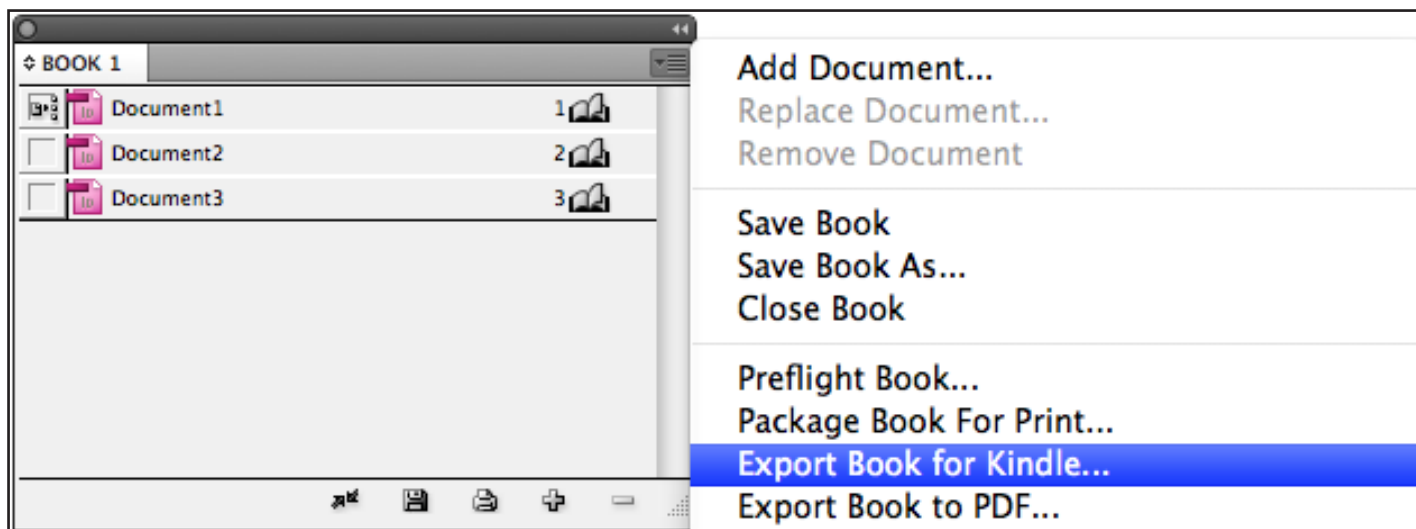
Documents (.indd):

1. Open the InDesign document (.indd) in Adobe InDesign
2. Then choose “File > Export for Kindle...” from the Menu to convert the document to Kindle format, as shown below.



Books (.indb):

1. Open the book (.indb) in Adobe InDesign
2. Choose “Export Book for Kindle...” from the list of options available for books in the “Book” widget, as shown below.



1.2.2 Export and Save

Kindle Plugin for Adobe InDesign® (Beta) provides a few options during the process of conversion to define properties of the Kindle book generated. The available conversion options are detailed below.

1. Select the location:

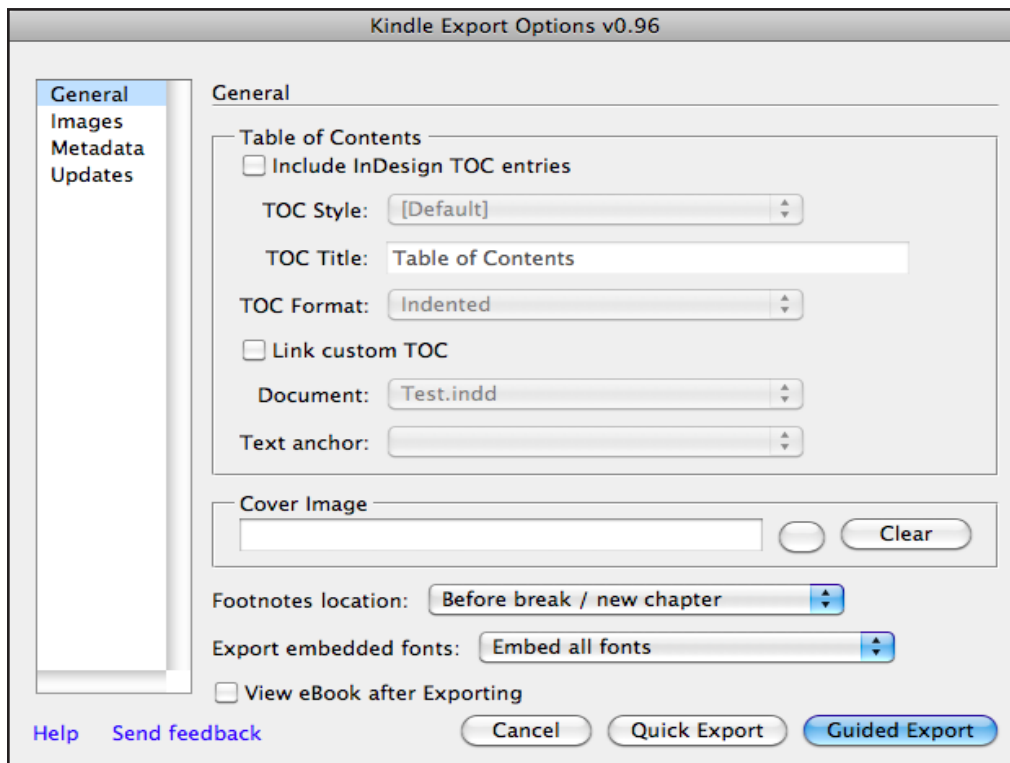
In the conversion process, the first step is to specify the location where the converted document will be saved.

2. Kindle Export Options:

“Kindle Export Options” dialog appears once the save location is specified. Users can specify the conversion

settings from these options as shown below.

General Options:



1. **Include InDesign Table of Contents** – Specify whether an InDesign table of contents is to be inserted into the book, which TOC style to use and the TOC title, which defaults to ‘Table of Contents’. You can also choose one of the following TOC formats:

- a. **Flat** layout means that all the TOC entries irrespective of the level will appear one below the other without any differentiating indentation.
- b. **Indented** format will render the TOC entries in such a way that the indentation is proportional to the level of the TOC entry.
- c. **Numbered** list will create a TOC in the form of a numbered list nested according to the levels.
- d. **Bulleted** list will similarly create a bulleted list of TOC entries nested according to the corresponding levels.

2. **Link Table of Contents** - Specify whether you want to link a manually created table of contents. You will need to drop a Text Anchor before the Table of Contents heading and select it in these options. An InDesign table of contents placed in the document cannot be linked in this way.

3. **Cover Image** – Browse and add a cover image to the book. Clear will remove the currently chosen cover image.

4. **Footnotes locations** – Positioning of the footnotes can be customized in the converted file according to the following three options. The default and recommended behavior is to insert the footnotes before a page break or new chapter.

- a. **After Paragraph** option will cause footnotes to be placed immediately after the paragraph that refers to the footnote.
- b. **Before break /new chapter** will lead to footnotes being placed in the mobi just before any page break. If the option “Place after page break” option is selected for chapter headings style, footnotes

will be placed before the chapter headings. However, if the INDD has no page breaks or constraints on chapter heading, then footnotes will appear at the end of the text.

c. End of book is a failsafe in case no other option gives an optimal result. In this case, all the footnotes will be collected together and inserted at the absolute end of the book.

5. Export embedded fonts – Select one of these options to choose the fonts that are to be embedded in the mobi file.

a. Don't embed any fonts option will ignore all the embedded fonts and cause all the text to default to the reader's font settings. Bullet markers styled with these fonts may be lost as a result, if the corresponding glyph doesn't exist in the fallback font.

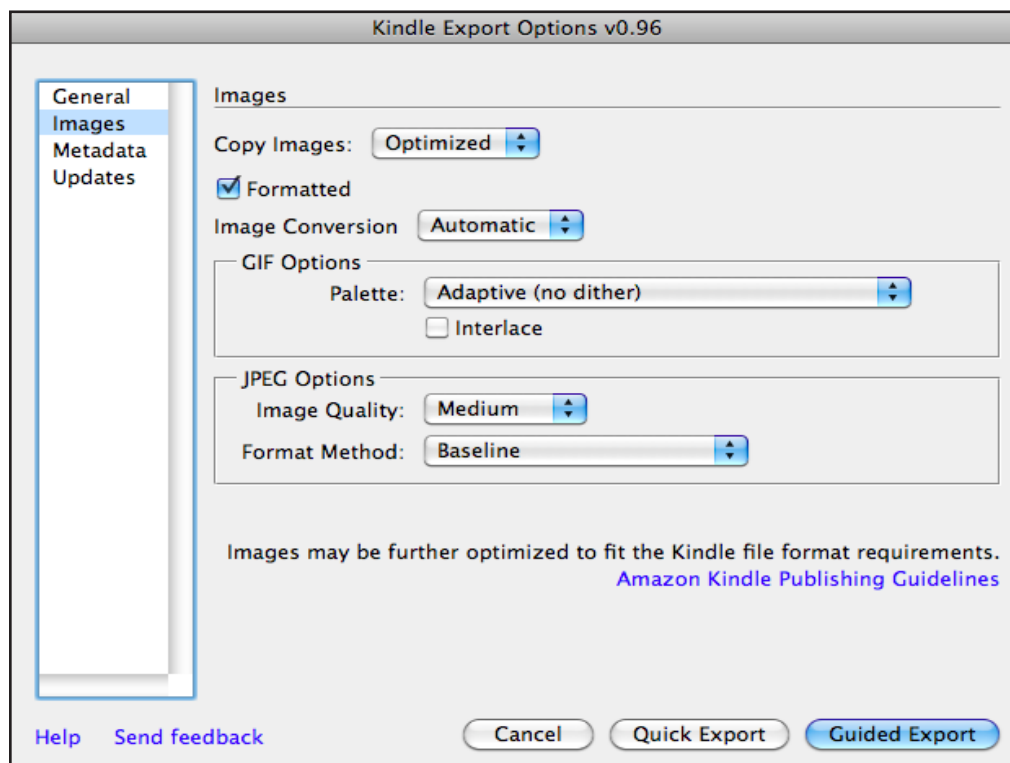
b. Embed only bullet fonts will cause all the text to default to the reader's font settings while embedding the fonts required for any bullet markers.

c. Embed all fonts option will cause all fonts to be selected for export.

6. View eBook after Exporting – On enabling this check box, the converted Kindle book will be opened and displayed in the system's default Kindle book reader.

Images Options:

These options can be left to their default values for a reasonable balance between image quality and file size. For most users, choosing between copying Optimized and Original images should offer a sufficient amount of flexibility.



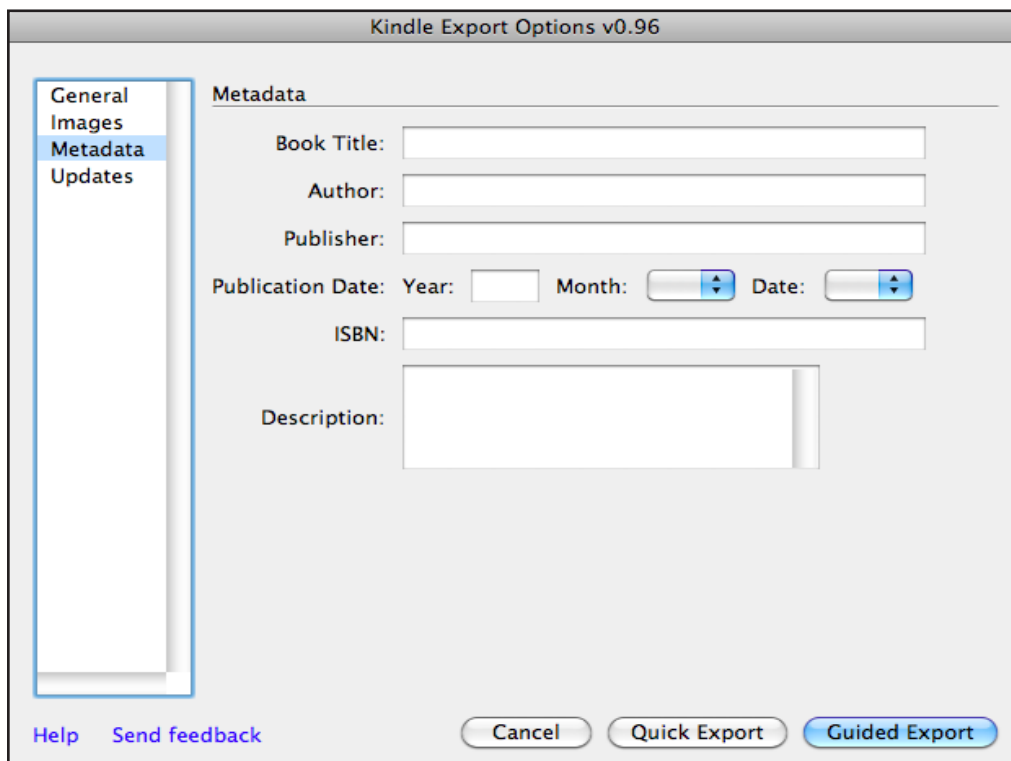
1. Original - All the original images will be used during conversion allowing kindlegen to optimize the images appropriately.

2. Optimized - Use images optimized by Adobe InDesign instead of the original images.

Described below are the optimization parameters used by Adobe InDesign, referenced from [Adobe InDesign Help](#).

3. **Formatted** - Preserves InDesign formatting, such as rotation or scale, as much as possible for web images.
4. **Image Conversion** - Lets you choose whether the optimized images in your document are converted to GIF or JPEG. Choose Automatic to let InDesign decide which format to use in each instance.
5. **GIF Options** - Lets you control how InDesign handles colors when optimizing GIF files. The GIF format uses a limited color palette, which cannot exceed 256 colors.
 - a. **Palette** - Choose Adaptive to create a palette using a representative sample of colors in the graphic without any dithering (mixing of small spots of colors to simulate additional colors). Choose Web to create a palette of web-safe colors that are a subset of Windows and Mac OS system colors. Choose System (Win) or System (Mac) to create a palette using the built in system color palette. This choice may cause unexpected results.
 - b. **Interlace** displays a slowly loaded image gradually by filling in missing lines. If this option is not select, an image looks fuzzy and gradually becomes clear as the image reaches full resolution.
6. **JPEG Options** - Lets you control how InDesign optimizes JPEG files.
 - a. **JPEG Options (Image Quality)** - Determines the trade-off between compression (for smaller file sizes) and image quality for each JPEG image created. Low produces the smallest file and lowest image quality.
 - b. **JPEG Options (Format Method)** - Determines how quickly JPEG graphics display when the file containing the image is opened on the web. Choose Progressive to make the JPEG images display gradually and in increasing detail as they are downloaded. (Files created with this option are slightly larger and require more RAM for viewing.) Choose Baseline to make each JPEG file display only after it has been completely downloaded; a placeholder appears in its place until the file displays.

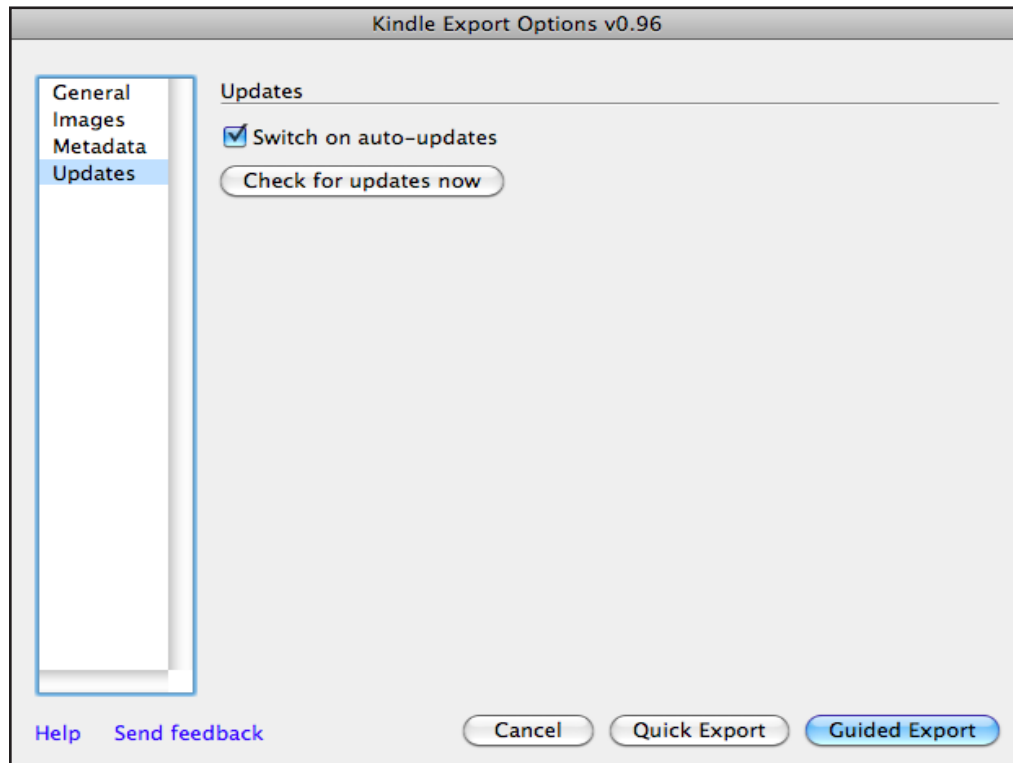
Metadata Options:



You can add certain metadata fields to your exported file. You can specify the title of the book, author(s), publisher, publication date, the ISBN and a brief description. Multiple authors may be separated by a semi-

colon(;). You can add a new line to the description field by pressing Ctrl+Enter. The publication date will only be added if a year is specified. The date will only be added if a month is specified.

Update Options:



The plugin will periodically check for updates automatically. It is highly recommended that you keep this option enabled to be notified about new updates whenever they are available. Keeping this option enabled will not cause any noticeable difference while starting InDesign or using the plugin.

Help – Opens up the Help documentation.

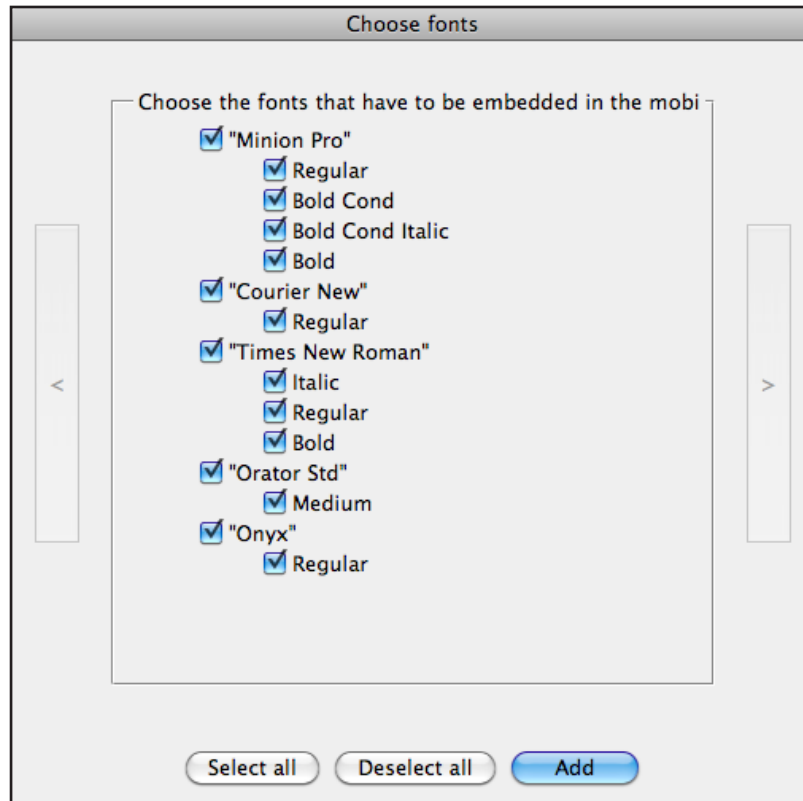
Send Feedback – Opens up the default email-client to send feedback to kindle-publishing-tools@amazon.com, prepopulating some debugging information.

Guided Export – Begins conversion of the document or book in a guided manner, displaying any additional conversion options during the process.

Quick Export – Converts the document or book without displaying any additional options dialogs. The options from the previous conversion will be used.

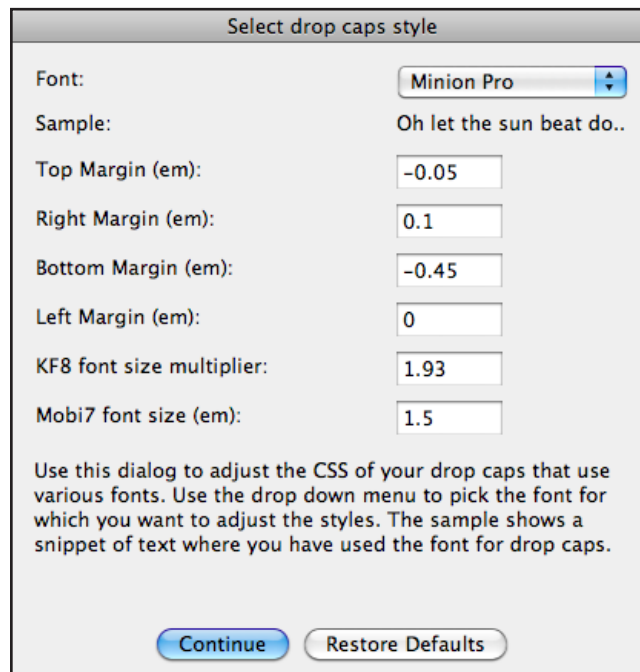
If the Guided Export button is clicked, additional dialogs may be displayed during the conversion process to configure additional options.

Choose embedded fonts:



This dialog allows you to choose the fonts used in the document that you want to be embedded in the mobi file. You can skip individual font styles without affecting other styles of that font. If you choose to skip a font due to size or license issues, any text to which that font has been applied will fall back to the default font on the reading device.

Configure drop caps style:



Different fonts have different metrics and so the same CSS style may not give the best performance for

various fonts. So you can configure the CSS style for drop caps for each font that you have used for a drop caps character. The sample text shows a small snippet of one of the texts where you have applied the font to drop caps. You can configure each of the four margins and the font size multiplier. Since drop caps won't work with the earlier Mobi format, you can specify a larger font size for the drop caps character, specifically for the Mobi format. The **Restore Defaults** button will restore all styles to the original values for that font.

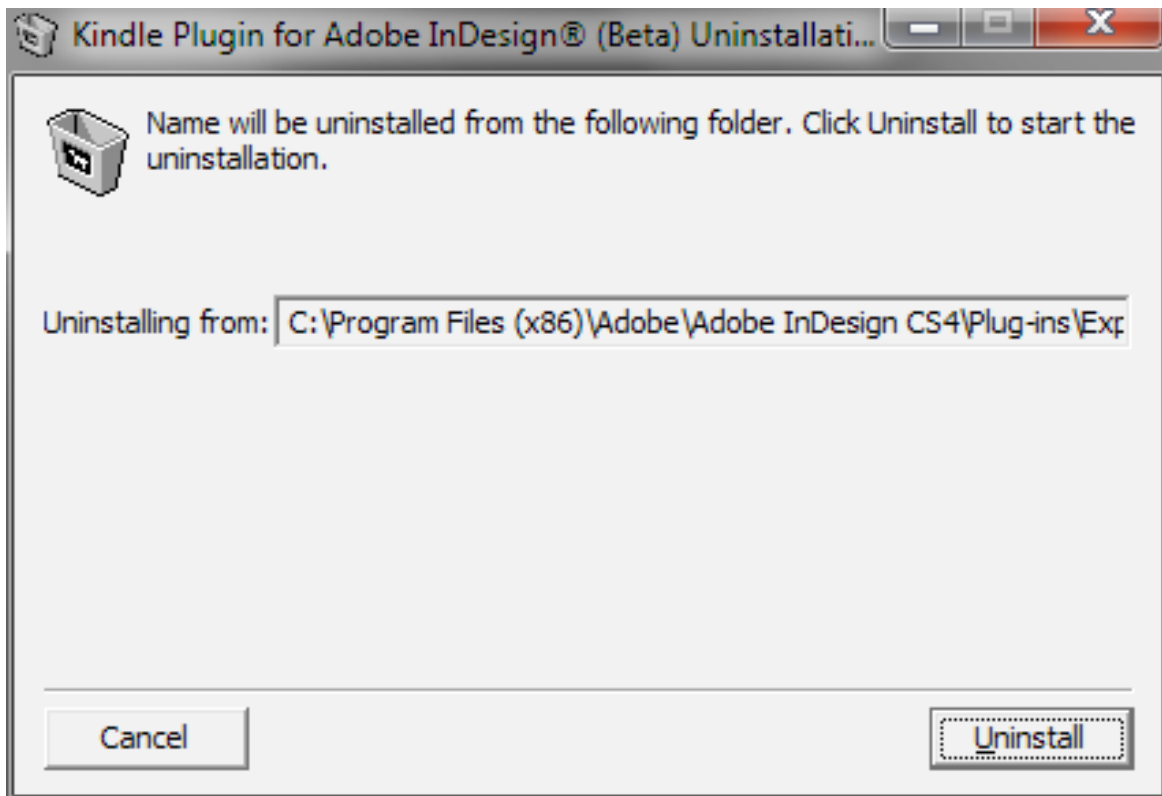
At the end of the conversion, a dialog will inform you of any warnings or errors encountered during the conversion process. If kindlegen generates any warnings, these will also be displayed in this dialog. If no warnings or errors occurred, and if you chose to open a preview after conversion, the exported file will open in your default application for opening Kindle files. We strongly recommend that you use [Kindle Previewer](#) for previewing the exported files.

1.3 Uninstallation

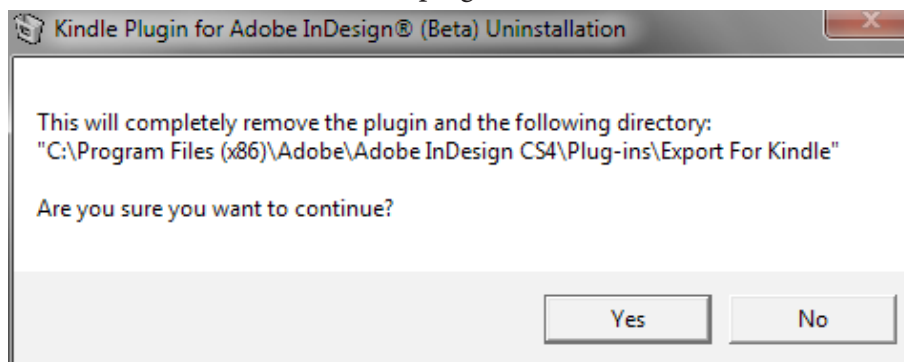
1.3.1 Windows

The steps below detail the uninstallation process:

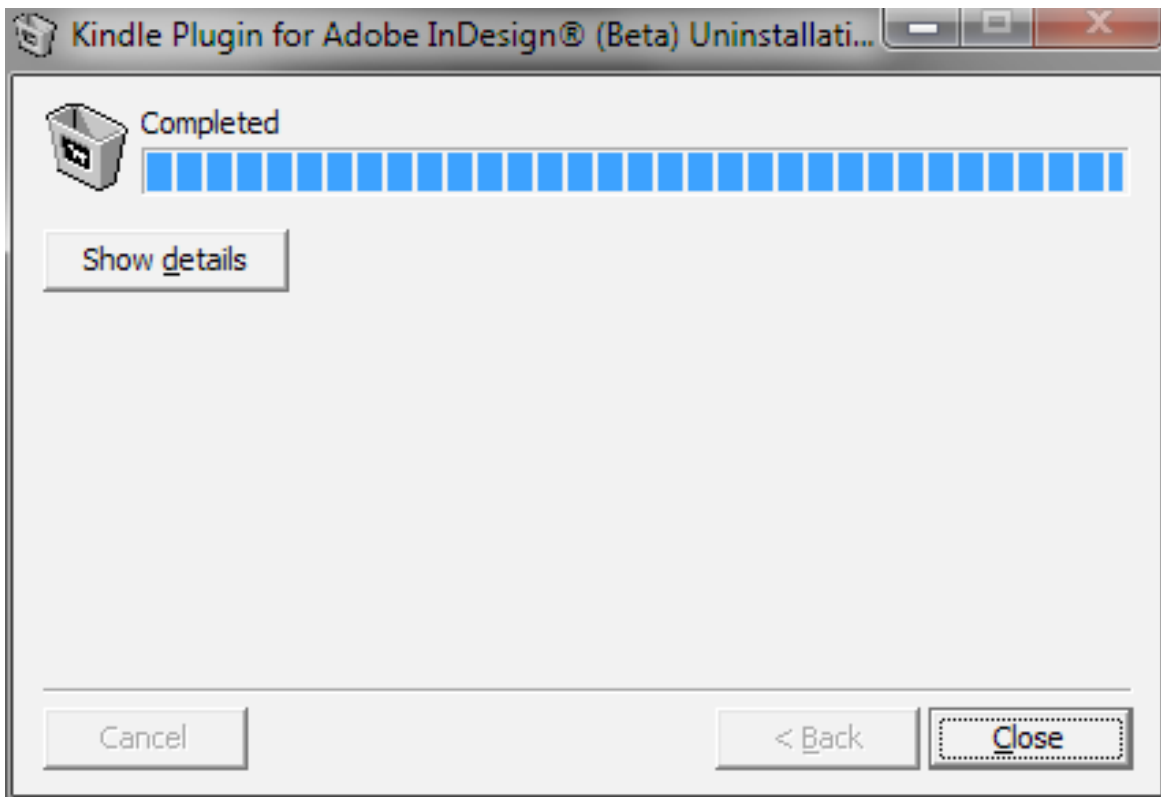
1. It is advisable to uninstall the plug-in after closing any open instances of Adobe InDesign. Adobe InDesign will need to be restarted after the plug-in is uninstalled.
2. To uninstall for Adobe InDesign CS4, select 'Uninstall Kindle Plugin for Adobe InDesign® (Beta)' from Start->All Programs->Amazon->Kindle Plugin for Adobe InDesign – CS4. Click the Uninstall button to start the uninstallation process.
3. To uninstall for Adobe InDesign CS5, select 'Uninstall Kindle Plugin for Adobe InDesign® (Beta)' from Start->All Programs->Amazon->Kindle Plugin for Adobe InDesign – CS5. Click the Uninstall button to start the uninstallation process.
4. To uninstall for Adobe InDesign CS5.5, select 'Uninstall Kindle Plugin for Adobe InDesign® (Beta)' from Start->All Programs->Amazon->Kindle Plugin for Adobe InDesign – CS5.5. Click the Uninstall button to start the uninstallation process.



5. Carefully review the location from which the plugin is to be installed. Click on "Yes" to proceed.



6. Click on “Close” once the plug-in is uninstalled successfully.



1.3.2 Mac

This plug-in can be uninstalled by deleting the ‘Export for Kindle’ folder from the two locations mentioned below.

1. For Adobe InDesign CS4
 - a. /Application/Adobe InDesign CS4/Scripts/
 - b. /Application/Adobe InDesign CS4/Plug-Ins/
2. For Adobe InDesign CS5
 - a. /Application/Adobe InDesign CS5/Scripts/
 - b. /Application/Adobe InDesign CS5/Plug-Ins/
3. For Adobe InDesign CS5.5
 - a. /Application/Adobe InDesign CS5.5/Scripts/
 - b. /Application/Adobe InDesign CS5.5/Plug-Ins/

1.4 Publishing Guidelines

Refer to the Publishing Guidelines document on our website <http://www.amazon.com/kindleformat/kindlepluginforadobeindesign>. The document has been provided in Adobe InDesign, PDF as well as Kindle formats.

1.5 Customer Support

For more information or support, please visit our website <http://www.amazon.com/kindleformat/kindlepluginforadobeindesign> or write to us at kindle-publishing-tools@amazon.com.

2. Release Notes

2.1 Product Releases

Release Number: 0.96

- Added support for KF8.
- Upgraded to kindlegen version 2.3.
- Added support for embedded fonts.
- Added support for drop caps.
- Added support for boxed elements with background color and rounded corners.
- Added support for various text effects and colors.
- Added support for special characters in bullets and numbered lists.
- Added support for various color spaces, including LAB and CMYK.
- Added support for embedded images.
- Improved formatting of text w.r.t. alignment, padding and indentation.
- Improved formatting and layout of tables.
- Improved fidelity of color conversion.
- Fixed issue where certain styles in threaded frames would be ignored.
- Fixed issue where files with lot of hyperlinks would cause conversion to hang.
- Fixed issue where footnotes options would cause page breaks to be ignored.
- Localized for Italian and Spanish languages.

Release Number: 0.95

- Localized for German and French languages.

Release Number: 0.94

- Added support for automatic updates.
- Added support for adding metadata to the mobi file.
- Added support for linking a user created Table of Contents.
- Fixed issue where conversion failed for documents using text paths.

Release Number: 0.93

- Added support for Adobe InDesign CS5.5.
- Upgraded to kindlegen version 1.2.
- Fixed issue where conversion would fail on Mac on a non-admin account.
- Fixed issue where some characters from tables used to get dropped.

Release Number: 0.92

- Added options for TOC formatting and title.
- Added options for footnotes placement.
- Added options for image quality and optimization.
- Added support for accurate positioning of TOC for INDD files.
- Added support for subscript and superscript.
- Added support for PNG, GIF and BMP formats as cover images.
- Added support for select special characters in book and TOC title.

- Added support for filtering of invalid special characters.
- Added check for Adobe InDesign running during (un)installation.
- Added check for admin privileges during (un)installation on Windows.
- Improved warning and error messages.
- Changed display of kindlegen output.
- Fixed crash when certain special characters are present in file paths.
- Fixed issue where paragraph indents are incorrectly converted for INDB files.
- Fixed issue where numbered lists are not indexed correctly.

Release Number: 0.91

- Added support for installation on multiple versions of Adobe InDesign.

Release Number: 0.9

2.2 Supported Adobe InDesign features

Listed below are the Adobe InDesign features that are supported by the current version of the Kindle Plugin for Adobe InDesign® (Beta) plug-in. Unsupported features will be lost during conversion.

1. Text
 - a. Font size
 - b. Font style
 - c. Font color
 - d. Embedded fonts
 - e. Drop caps
 - f. Special characters
 - g. Superscripts & subscripts
 - h. Text effects
2. Alignment
 - a. Left aligned
 - b. Right aligned
 - c. Center aligned
 - d. Justified
3. Lists
 - a. Bulleted and numbered lists
 - b. Multilevel lists
 - c. Special characters as list markers
 - d. Margins and spacing
4. Book Features
 - a. Cover image (PNG, JPEG, BMP and GIF formats)
 - b. Internal and external links
 - c. Numbered and bulleted lists
 - d. Table of Contents
 - e. Footnotes
 - f. Page break
 - g. Conditional text

5. Images
 - a. Linked images
 - b. Embedded images
6. Boxed elements
 - a. Bordered text frames
 - b. Rounded corners
 - c. Border color and styles
 - d. Background color
7. Tables
 - a. Table structure
 - b. Paragraph indentation
 - c. Cell margins and alignment
 - d. Background color
 - e. Cell inset spacing
 - f. Column width, Row height
 - g. Border styles, width and colors

2.3 Partial List of unsupported Adobe InDesign Features

- Multicolumnar content
- Text paths